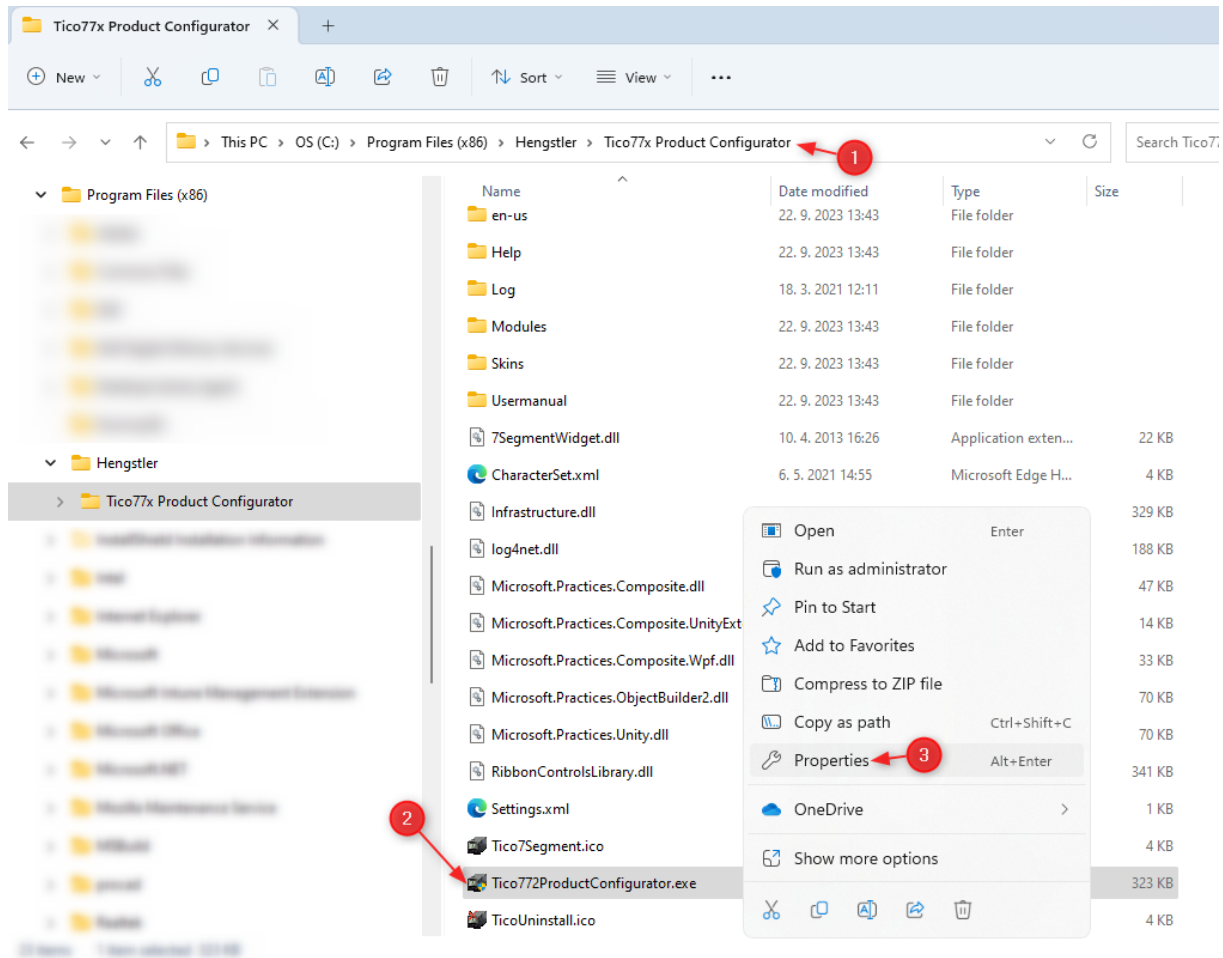
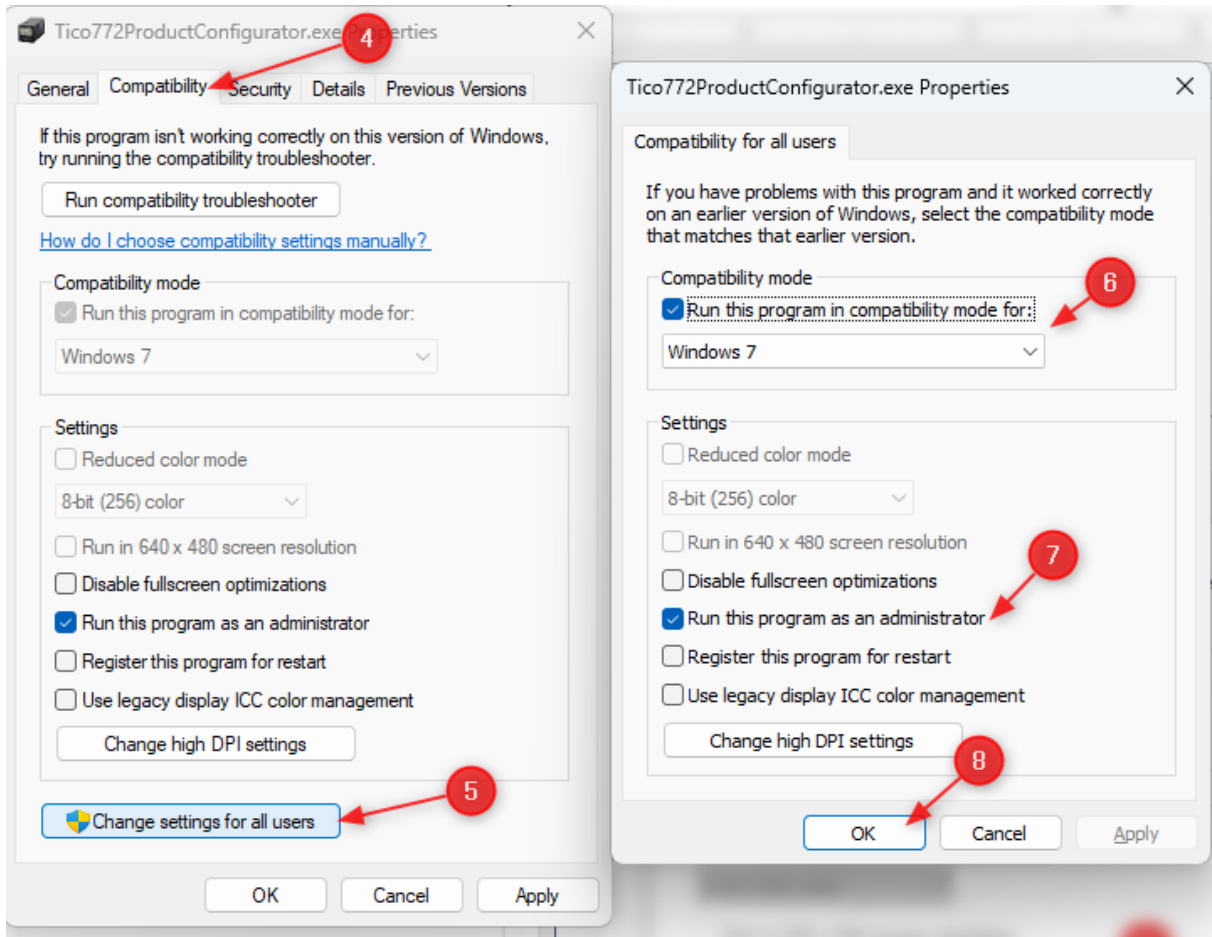


Compatibility settings for tico 77x Product Configurator

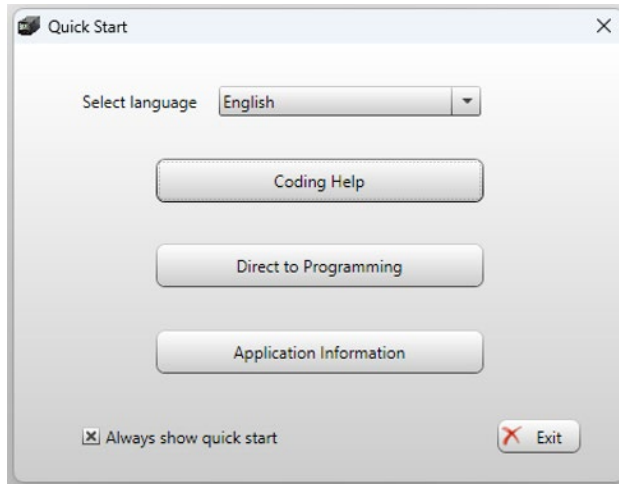
1. Search for the folder where the Program is installed
2. Right click on the Program executable file (Tico772ProudctConfigurator.exe)
3. Open File properties



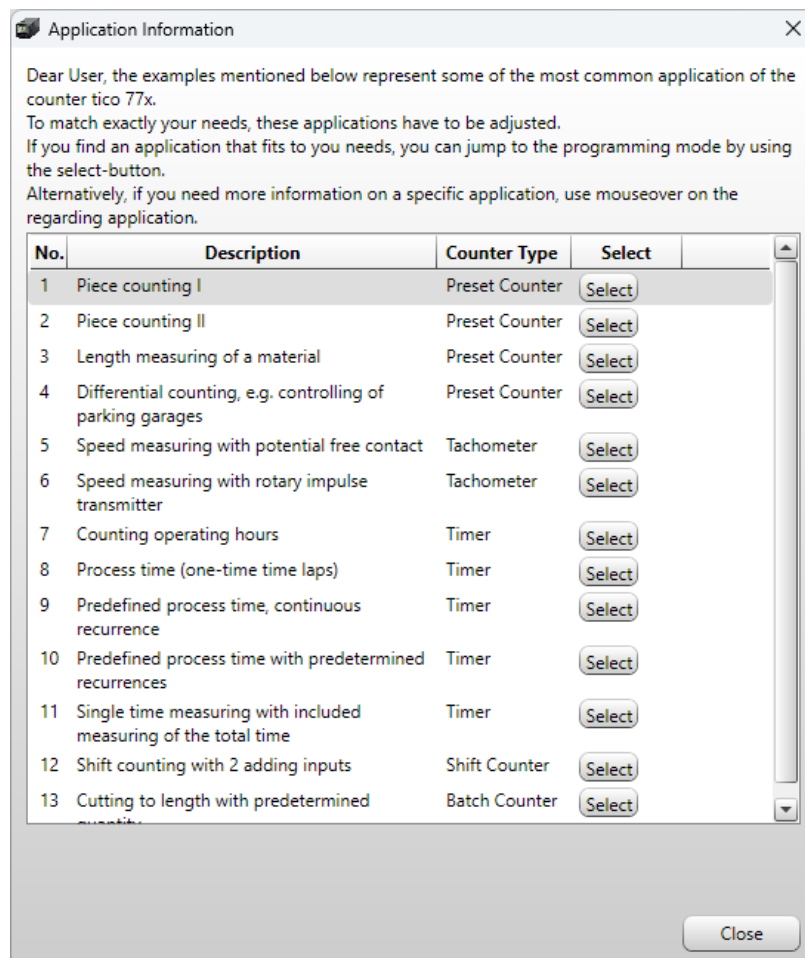
4. Choose Compatibility options
5. Click option „Change settings for all users“
6. Here select „Windows 7“ in the section Compatibility mode and „Run this program in compatibility mode for:“
7. Select option „Run this program as an administrator“. Please note that Administrator rights are necessary to properly use the program
8. Confirm OK



9. After the program is started a menu is shown. Selecting “Coding Help” a “General help-file” opens Help information



10. Selecting „Application Information“ opens window with Settings of the product for most common applications. After choosing „Select“ the specific settings are used and the program will start. These settings can then be modified by the user directly in the Program.

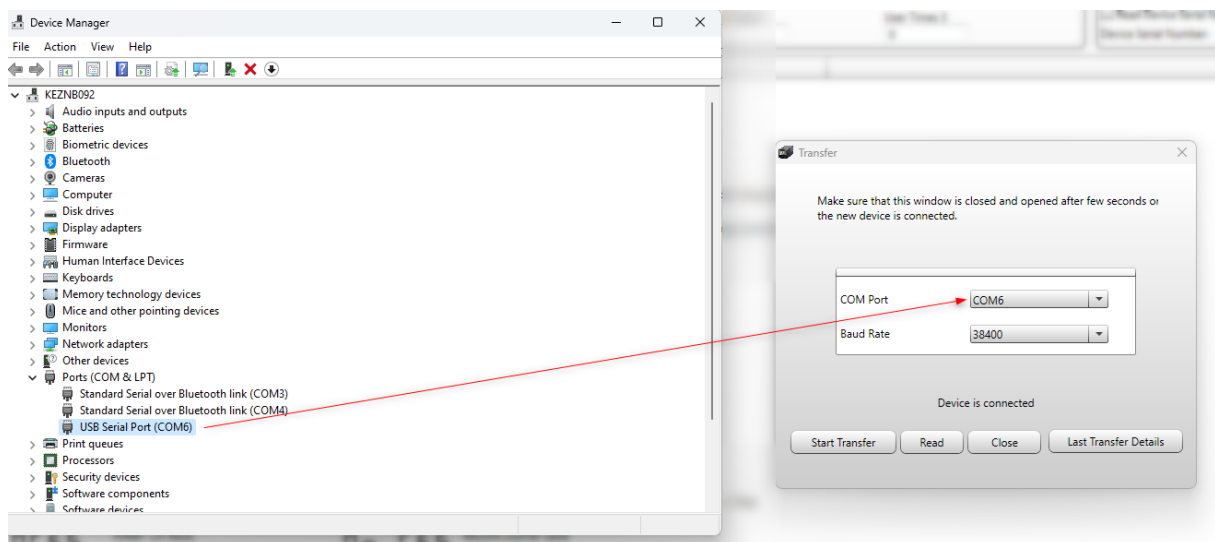


11. Selecting “Direct to Programming” will start the Configurator program

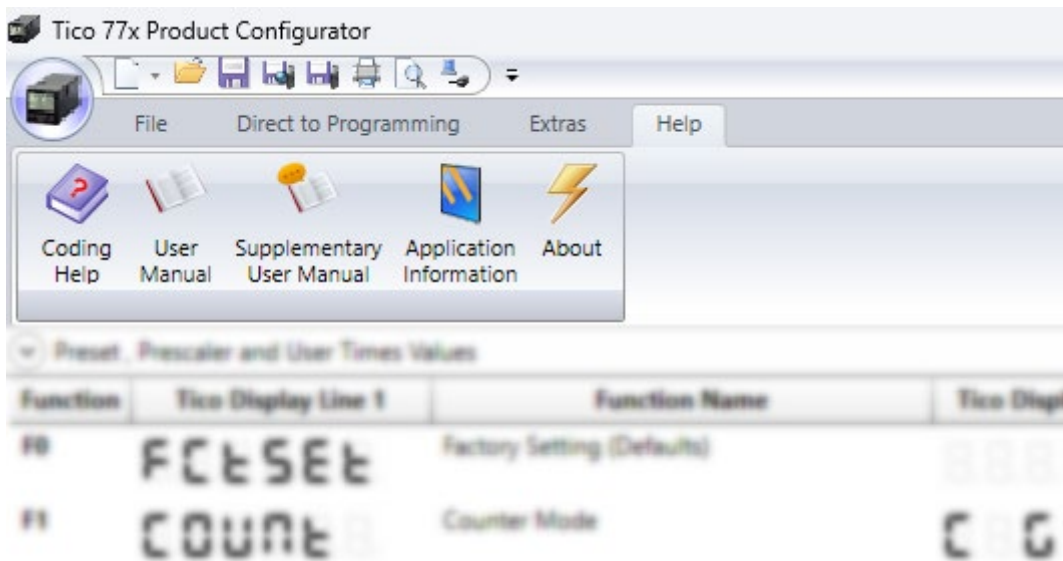
Note to the Transfer function

Before the Transfer function it is necessary that the counter is connected with the Computer via USB Cable.

As soon as the Transfer function is selected, a window pops up with selection for COM Port and Baud Rate. These are normally selected correctly. However, the correct COM Port where the counter is connected can be checked in the Device Manager.



Program HELP



After clicking the „Help“ button in the program Menu, several options are available:

- **Coding Help**

A “General help-file” opens with Help information for the Program.

- **User Manual**

The User Manual for tico 77x product(s) will be shown.

- **Supplementary User Manual**

The User Manual for tico 773 and 774 with Serial communication features will be shown.

- **Application information**

This opens window with Settings of the product for most common applications. After choosing „Select“ the specific settings are used and the program will start. These settings can then be modified by the user directly in the Program.

Troubleshooting

In case the program stops communicating with the counter or a message „Device not connected“ pops up, although the cable connection between the counter and the computer is correct try one of the following:

- Turn the counter OFF and ON again. The communication should restart correctly
- Restart the program and the communication restart correctly